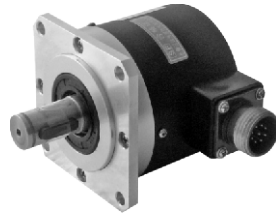


PZF58 series



E: Voltage output
 C: Open collector output
 F: Complementary output(Push pull)
 L: Line driver Output
 T: Line driver (high TTL)

Explanation of model



E: Axial cable
 G/GM: Radial cable
 C: Side entry plug
 J: Side entry rectangle plug

For example

PZF5815-1024-C05D is outer diameter $\Phi 58$, shaft diameter $\Phi 15$, 1024P/R, side entry plug, supply voltage 5V, line driver output .

Technical data

Resolution	100-5000P/R	Rotating inertia	$3.5 \times 10^{-6} \text{kg} \cdot \text{m}^2$
Supply voltage	DC5V or DC 10V~30V	Max rotating speed	6000r/min
V_H Output voltage	$\geq V_{CC} \times 70\%$	Vibration resistance	50m/s ² (10~200Hz) (XYZ each direction 2hours)
V_L Output voltage	$\leq 0.5V$	Shock resistance	980m/s ² (XYZ each direction 2times) last 6ms
Current consumption	$\leq 150\text{mA}$	Protection	IP65
Output phase	A. B. Z	Operating temperature	-10°C ~ +70°C
Frequency response	100kHz Max	Storage temperature	-20°C ~ +80°C
Rise/fall time	$\leq 1\mu\text{s}$ or line driver $\leq 0.1\mu\text{s}$	Operating humidity	30~85%RH
Starting torque	$3 \times 10^{-3} \text{N} \cdot \text{m} (+25^\circ\text{C})$	Weight (no cable)	0.65kg
Shaft loading	Radial 40N Axial 20N	Accessories	

Connection table

cable color		Red	Black	White	Green	Yellow	Blue	Orange	Brown	Shield
Output form	C/E/F	VCC	0V	A	B	Z	—	—	—	FG
	P/L/D/H/M	VCC	0V	A	B	Z	\bar{A}	\bar{B}	\bar{Z}	FG
7PIN		1	7	3	4	5				6
9PIN		4	3	1	2	5	8	9	6	7
19PIN		8	10/12	1	3	2				17

Dimension(mm)

